

This guide provides the basic operating procedures for this equipment. For detailed information, see the Operator's Manual in the supplied CD-ROM. You can get the latest version of the manual by accessing the quick response code at the back of this guide. Connection of sensors required.

iPhone, iPod and iPad are trademarks of Apple Inc. Android is a trademark of Google Inc. All brand and product names are trademarks, registered trademarks or service marks of their respective holders.

The screenshots in this manual are taken from the TZTL12F and TZTL15F. On-screen appearance for the TZT2BB may differ slightly, depending on the monitor used.

## Operational Overview

### Home icon, power switch operations

#### TZTL12F/TZTL15F



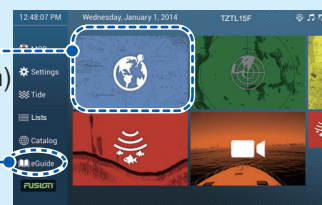
Home icon  
Displays the  
home screen.

#### TZT2BB SWITCH BOX



Display icons  
(max. 16 on home screen)

"eGuide" provides  
an abbreviated  
operator's guide.



Home screen

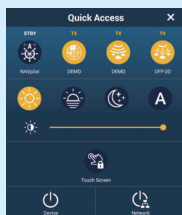
#### Power off

**Power off function only:** Powers off this unit.

**Power off linked function:** Powers off all NavNetTZ touch2 units in network.

#### Power switch

- Turns on power
- Shows [Quick Access] window.



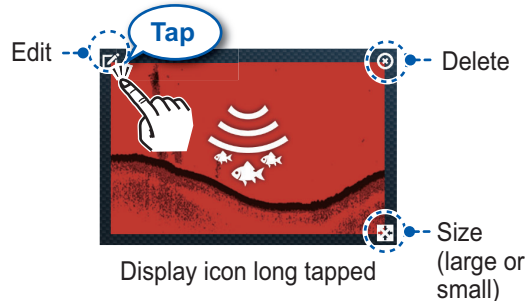
#### Brilliance, Hue

TZTL12F/15F: Adjust display brilliance.  
TZT2BB: Adjust power lamp and key backlight brilliance.



#### How to edit a display icon

Long tap a display icon to edit, delete, resize, or change its location.

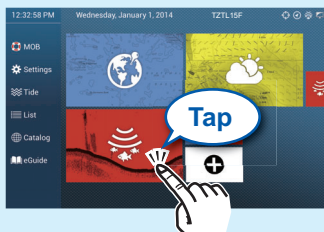


### How to select a display

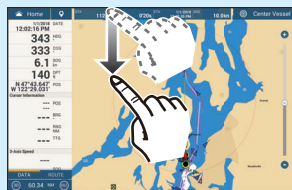
Tap a display icon on the home screen

OR

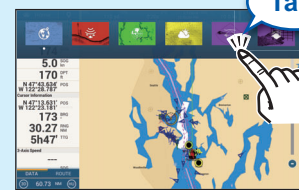
Tap a display icon on the quick page



Home screen



Swipe downward from top of display



Quick page



**FURUNO ELECTRIC CO., LTD.**

www.furuno.com

# Touchscreen operations

## Tap



- Select an item on a menu.
- Select an object to show the corresponding pop-up menu.

## Drag, swipe



- Move the chart.
- Scroll the menu.
- Show slide menu, layer menu.

## Pinch



Zoom in



Zoom out

- Zoom in, zoom out the plotter and weather displays.
- Change the range on the radar display.

## Slider bar



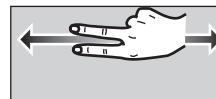
Tap operation also available.

## Two finger tap



Do the function assigned to [Function Gesture] in the [Settings] - [General] menu.

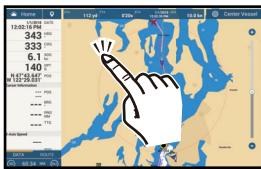
## Two finger drag



Change the viewpoint position on the 3D display.

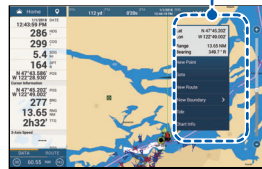
# Menu operation

## Pop-up menu



Tap screen (applicable point, object, etc.)

## Pop-up menu



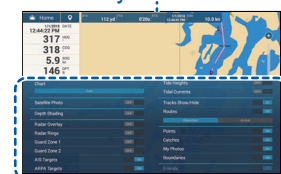
Tap the required function.  
(">" indicates additional options.)

## Layer menu



Swipe upward from the bottom edge.

## Layer menu



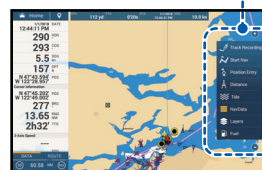
Tap the required function.

## Slide-out menu



Swipe leftward from the right edge.

## Slide menu

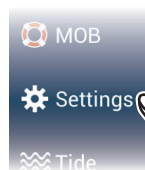


Tap the required function.  
Icon color and function state  
Yellow: ON, White: OFF

## Settings menu



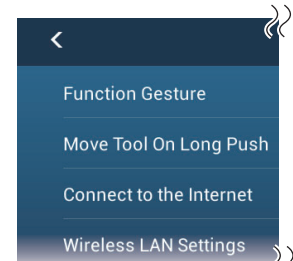
Tap the [Home] icon.



Tap [Settings].

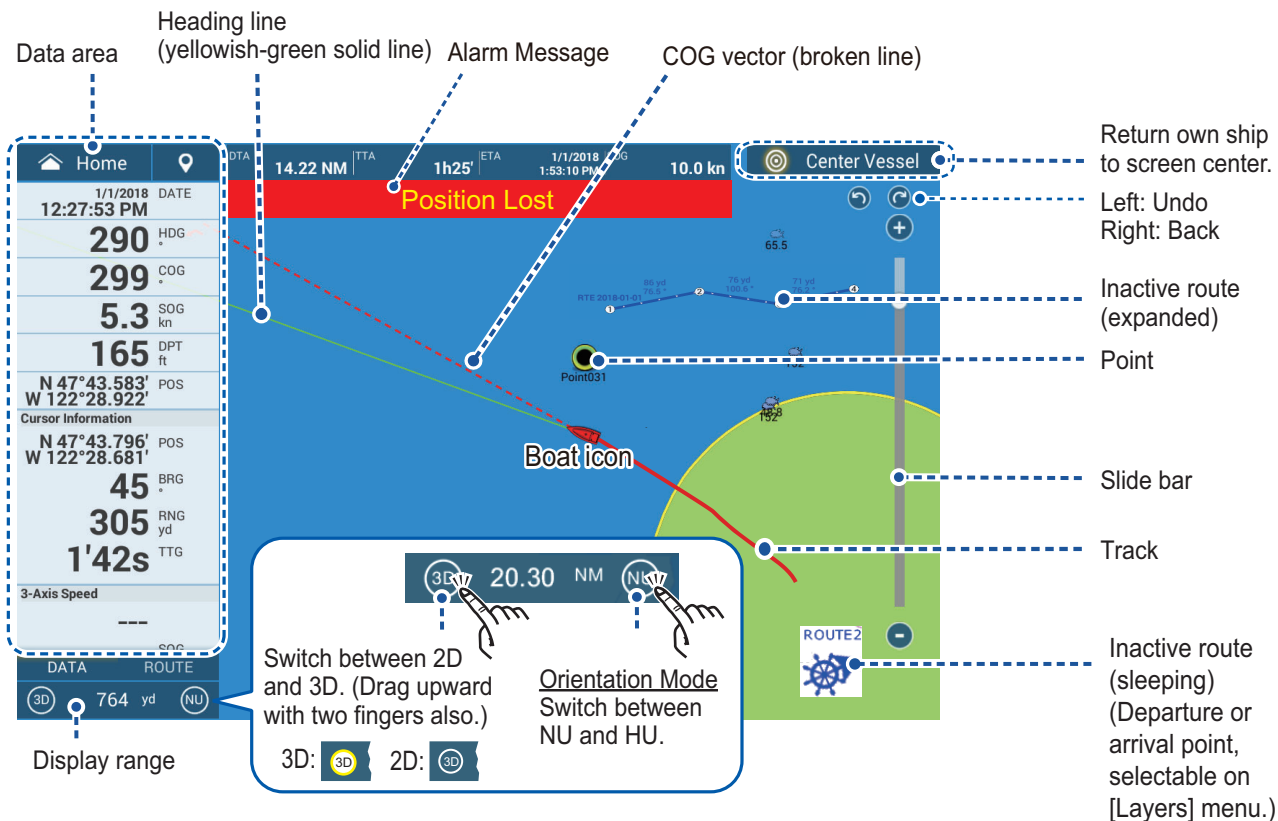


Drag menu to find required item, then tap item.



Tap the required option.

# Plotter



## Data Area (Data Box)

Swipe from the left edge of the screen rightward to show the data area at the left edge of the screen. To hide the data area, swipe opposite direction.

### Data box settings



Long tap the data box to show [Edit NavData] display.

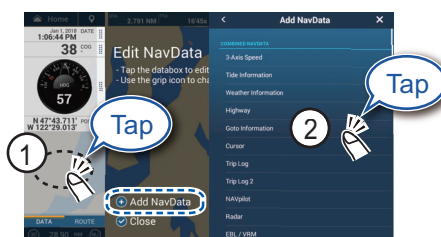
To delete a data box, or change the displayed data;



1 Tap the data box to delete or change.

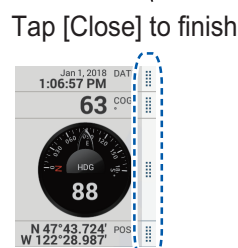
2 To delete the data box: Tap the [Delete]. To change the data: Tap the data to display.

To add a data box;



1 Tap empty space on the data box or [+Add NavData]. 2 Tap a data to add.

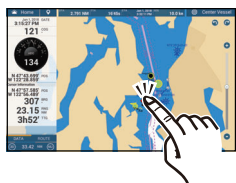
Tap [Change Type] to change the data display method among Graphic (analog), Numeric (digital) and Graph.



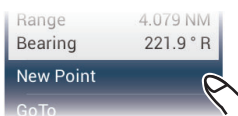
## Points/boundaries

Points can be entered on the plotter display (radar and fish finder displays also) to mark important locations such as a good fishing spot. Point attributes (position, symbol type, color, etc.) are recorded to the points list. Also, boundaries can be set at the position desired (net position, area to avoid, etc.)

### How to enter a point



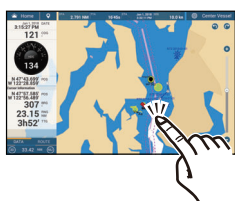
Tap where to enter a point.



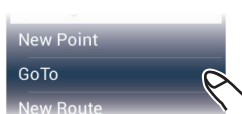
The point is entered on the screen.

### How to set a point as destination

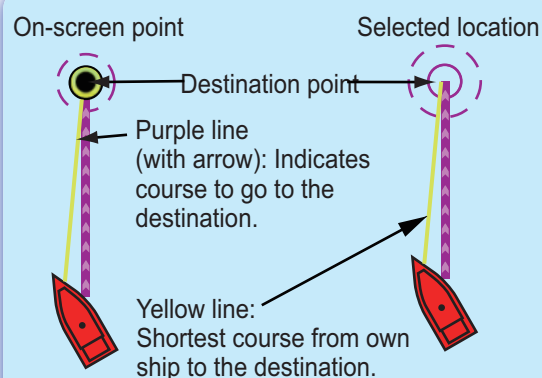
#### On-screen point



Tap a point or the location to set as destination.

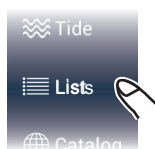


If a point was tapped.

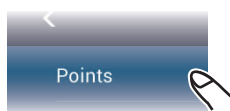


#### Points list

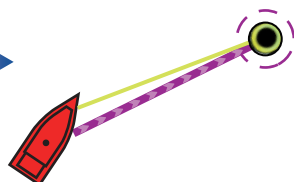
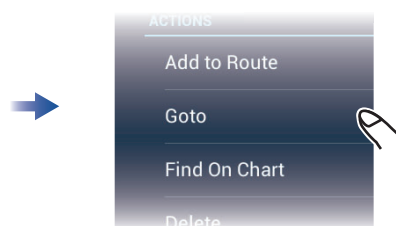
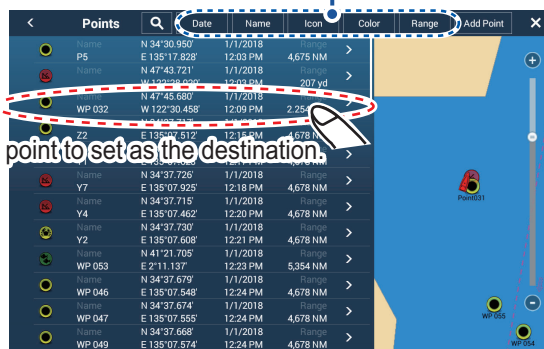
Sort the list by date, name, icon, color, range.



Tap [Lists] on the home screen.



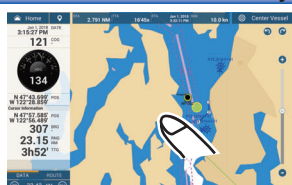
Tap the point to set as the destination.



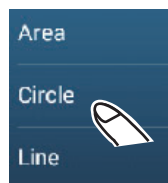
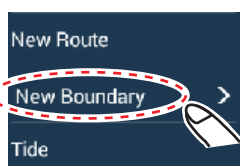
#### Notice

**Note:** [Find on Chart] puts the selected point at the screen center.

### How to set a boundary



Tap the position where to set a boundary.



Tap the shape to use for the boundary.

[Area]/[Line]: Tap necessary points to complete the boundary, referring to "Route" on the next page.

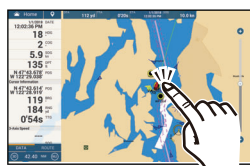
[Circle]: Drag icons to adjust the size and position, and then tap [End Boundary].



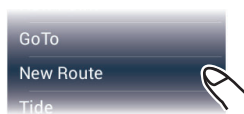
# Routes

A route is comprised of a series of waypoints leading to a destination. Routes are saved to the routes list.

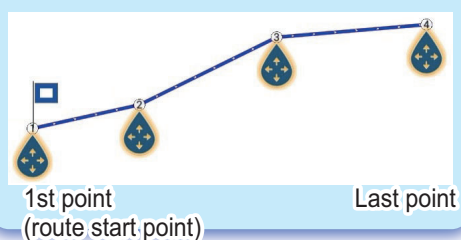
## How to create a new route



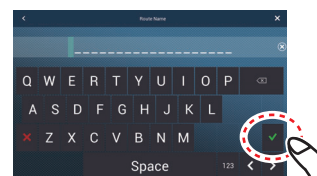
Tap the first point for the route.



Tap the next point for the route.  
Repeat to enter all points for the route.



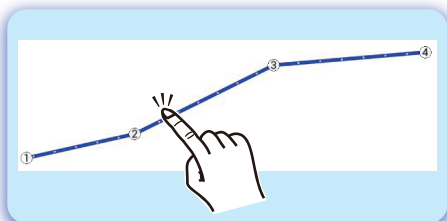
At the last point  
End Route  
(Top right corner)



Enter a name for the route, then tap [✓].

## How to follow a route

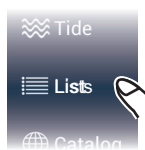
### On-screen route



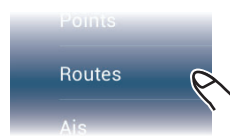
Tap a leg of the route.



### Routes list



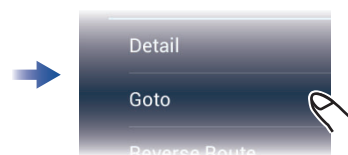
Home screen

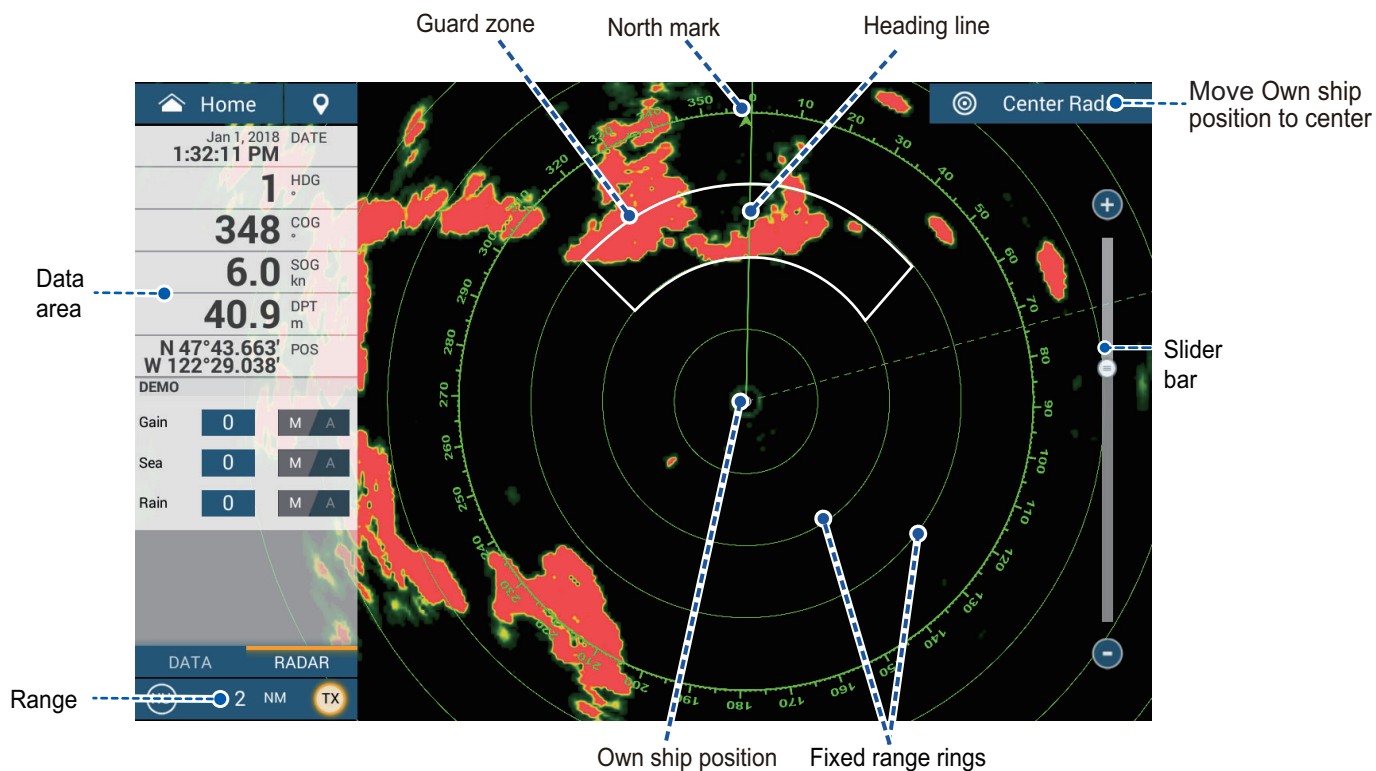


Sort list by date, name, color, length or range.

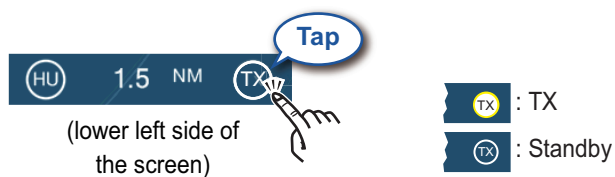


Tap the route.

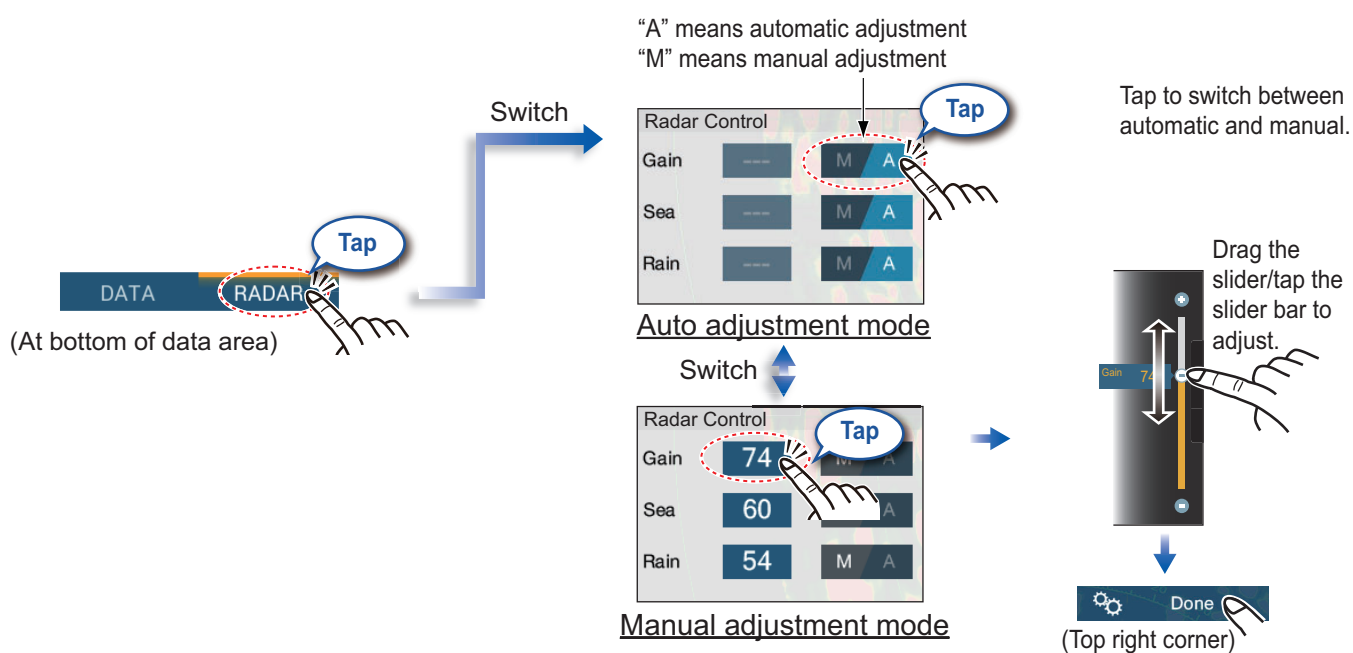




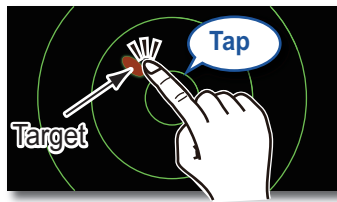
## How to switch between standby and TX



## How to adjust the gain / sea clutter / rain clutter



# How to measure the range, bearing from own ship to a target

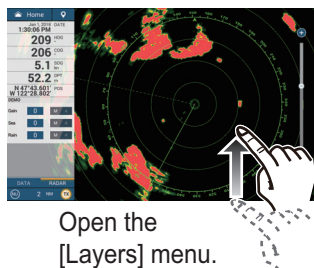


Tap a target to show its range and bearing from own ship.

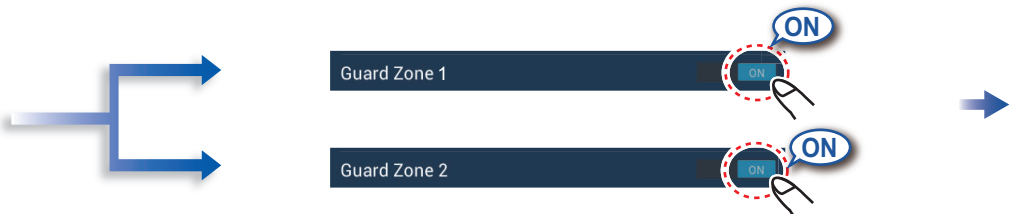


## How to set a guard zone

A guard zone alerts you (with aural and visual alarms) when a radar target enters the area you specify.



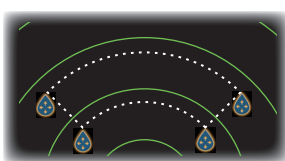
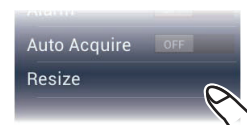
Open the [Layers] menu.



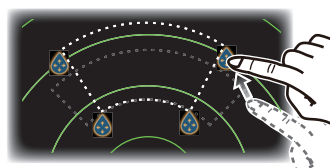
The guard zone appears in dashed lines.



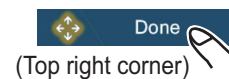
Tap dashed line on guard zone.



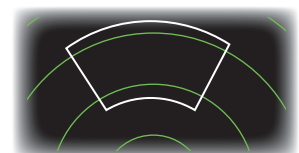
An icon appears at each corner of the guard zone.



Drag the icons to set guard zone.



Tap the guard zone again.

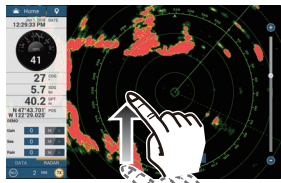


The dashed lines change to solid lines, indicating the guard zone is active.

# ARPA Operation

ARPA is an anti-collision aid that tracks the movement of other ships to help prevent collision. ARPA not only tracks other ships but also provides their navigation data. Targets can be acquired manually, automatically, or both automatically and manually.

## How to show, hide ARPA symbols



Open the [Layers] menu.

ARPA Targets



ARPA symbols ON

ARPA Targets



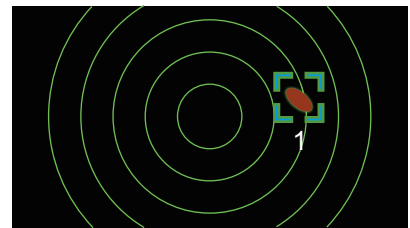
ARPA symbols OFF

## How to manually acquire a target

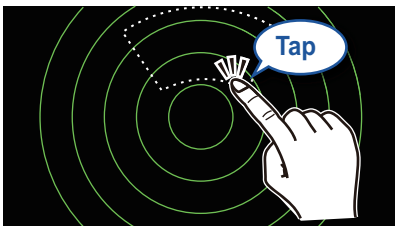


Tap the target to acquire.

Acquire

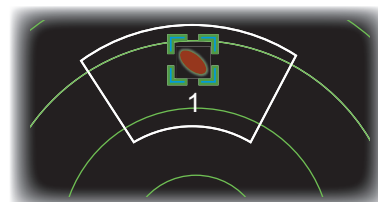


## Automatic target acquisition



Set a guard zone, then tap the guard zone.

Auto Acquire



The dashed lines change to solid lines, indicating the guard zone is active.

## ARPA symbols



At acquisition



Within 30 seconds after acquisition



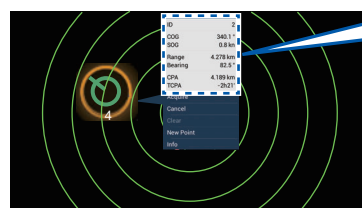
Lost target

## How to display target data



ARPA symbol

Tap an ARPA target to show its data.



ID	2
COG	340.1 °
SOG	0.8 kn
Range	4.278 km
Bearing	82.5 °
CPA	4.189 km
TCPA	-2h21'
Acquire	
Cancel	
Clear	
New Point	
Info	



## CPA/TCPA alarm

The CPA/TCPA alarm releases an aural alarm and a visual alarm (message in Status bar) when both the CPA and TCPA of a tracked target are equal to or lower than the CPA/TCPA alarm setting.

CPA: Closest point of approach

TCPA: Time to closest point of approach

### How to set the CPA/TCPA alarm



### How to acknowledge the CPA/TCPA alarm

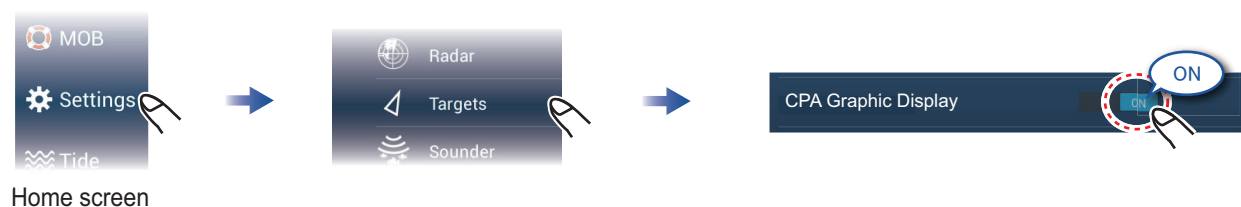
Tap the alarm message (top of screen) to acknowledge the alarm and stop the aural alarm.



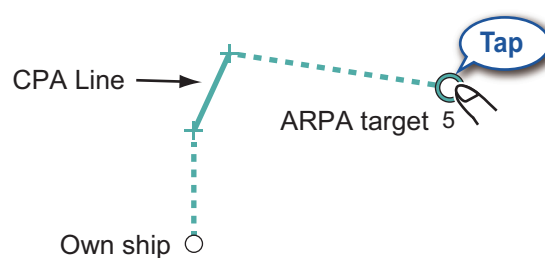
## CPA Line

The CPA Line feature gives you a visual line that depicts the closest point of approach to a selected ARPA target. To use this feature, own ship position and heading data is required.

### How to enable the CPA Line feature

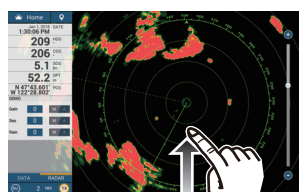


### How to show the CPA Line



# AIS (Automatic Identification System)

## How to show or hide AIS target symbols



Open the [Layers] menu.



AIS Targets

ON

AIS symbols ON

OFF

AIS symbols OFF

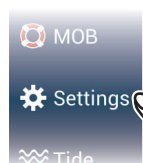
## AIS target symbols

	Class A AIS	Class B AIS	BFT* AIS
Activated target	SOG and COG vector Color: Blue	SOG and COG vector Color: Green	SOG and COG vector Color: Blue (filled)
Dangerous target	Color: Red Flashing		
Lost target	Color - AIS target: Blue - Cross: Red	Color - AIS target: Green - Cross: Red	Color - AIS target: Blue (filled) - Cross: Red

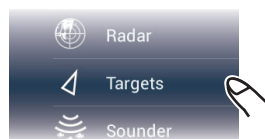
\*: Blue Force Tracking

## Proximity AIS target alarm

The proximity AIS target alarm releases aural and visual alarms when the distance between own ship and an AIS target is near the alarm value.



Home screen

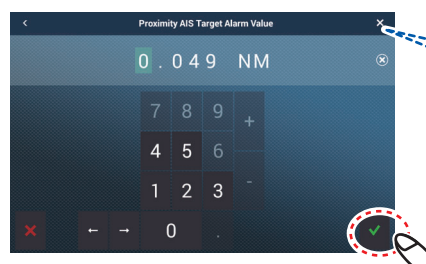


Proximity AIS Target Alarm

ON

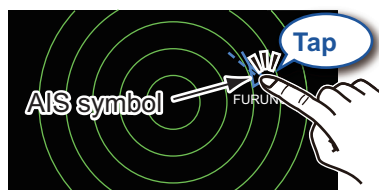
ON

Proximity AIS Target Alarm Value 100 yd

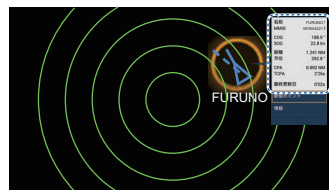


Set the alarm value, then tap [✓].

## How to show AIS target data

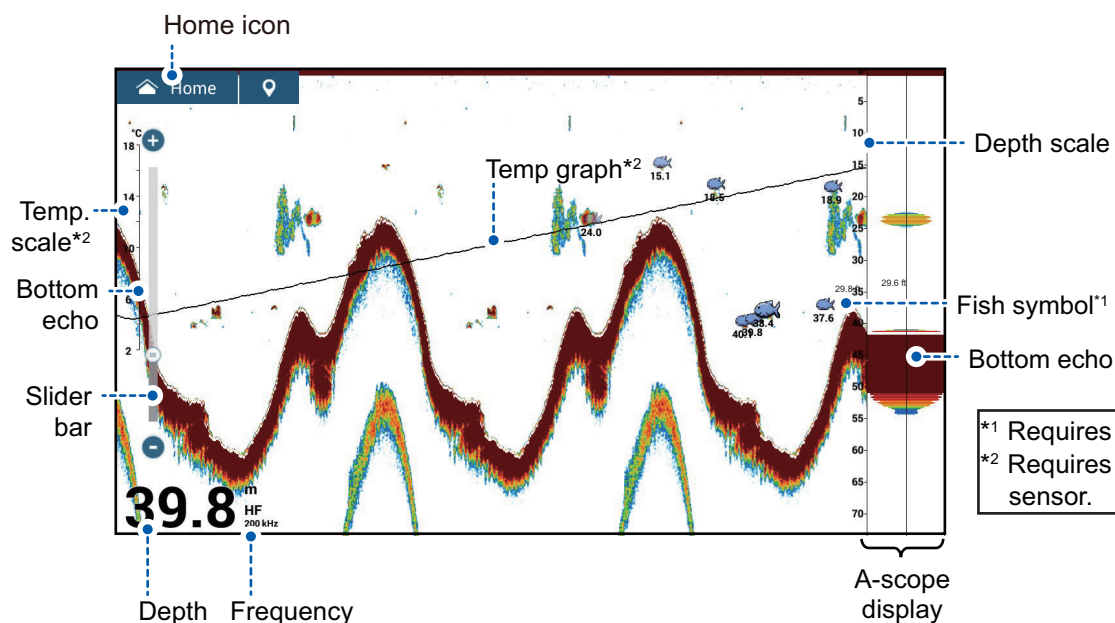


Tap an AIS target to show its data.



Name	FURUNO
MMSI	987654321
COG	173.0 °
SOG	0.1 kn
Range	20.61 NM
Bearing	354.6 °
CPA	20.55 NM
TCPA	-16'05s
Last Update	0'39s
New Point	

# Fish Finder



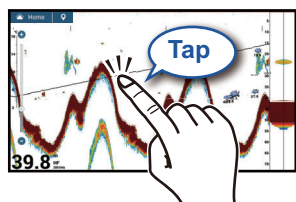
**Note:** Names of menu items may be changed depending on the transducer connected.

## How to select a frequency

Low frequency: For “normal” use.

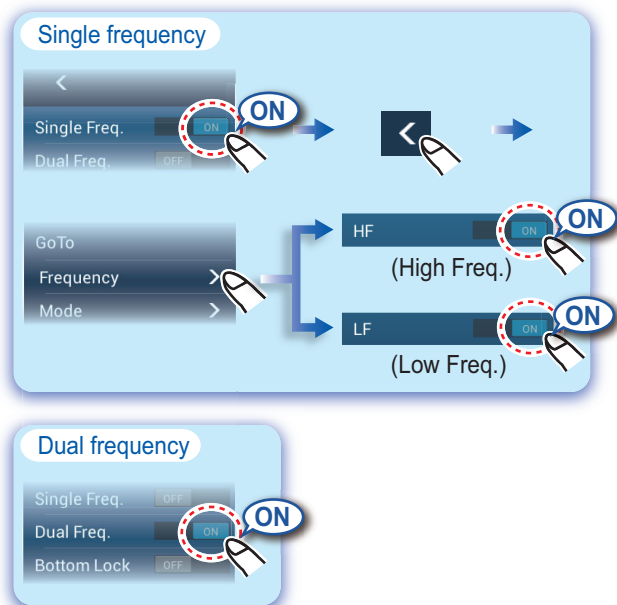
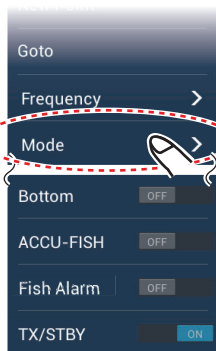
High frequency: For detailed observation of schools of fish.

Dual frequency: Show both the low and high frequency pictures.

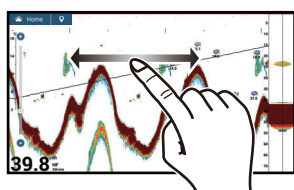


### Notice

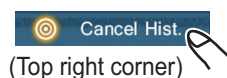
[TX/STBY] on the layer menu toggles between TX and standby.



## How to show past echoes (echo history)



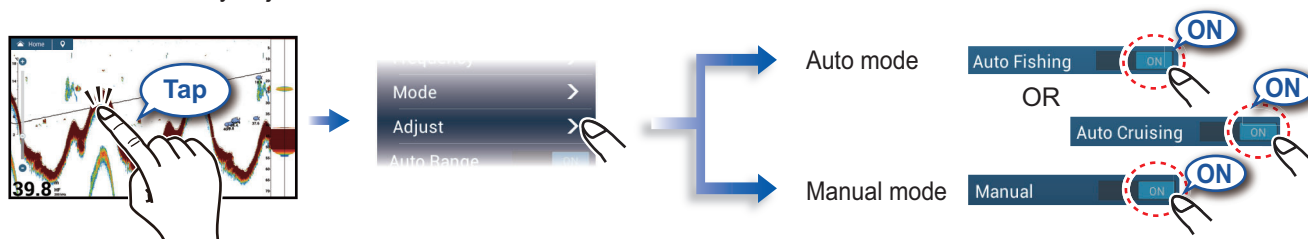
Swipe leftward or rightward to show past echoes.



Return to normal display.

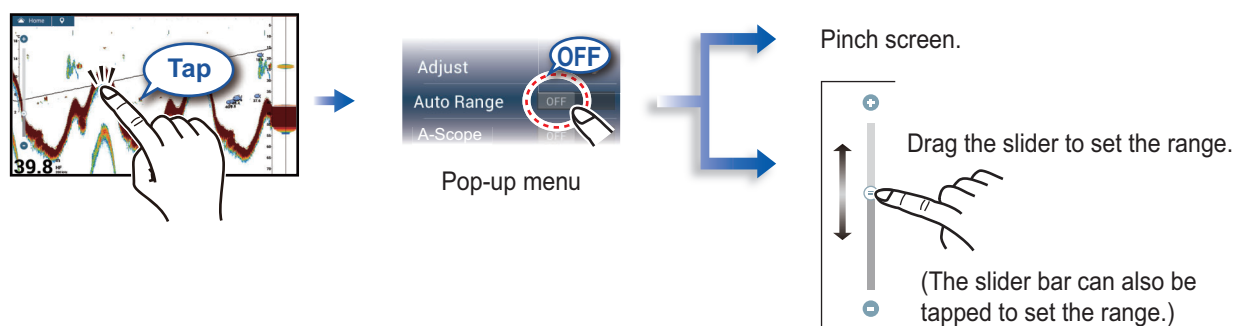
# How to select the operating mode

The fish finder is available in automatic and manual operation. For automatic operation, gain, clutter and TVG are automatically adjusted.

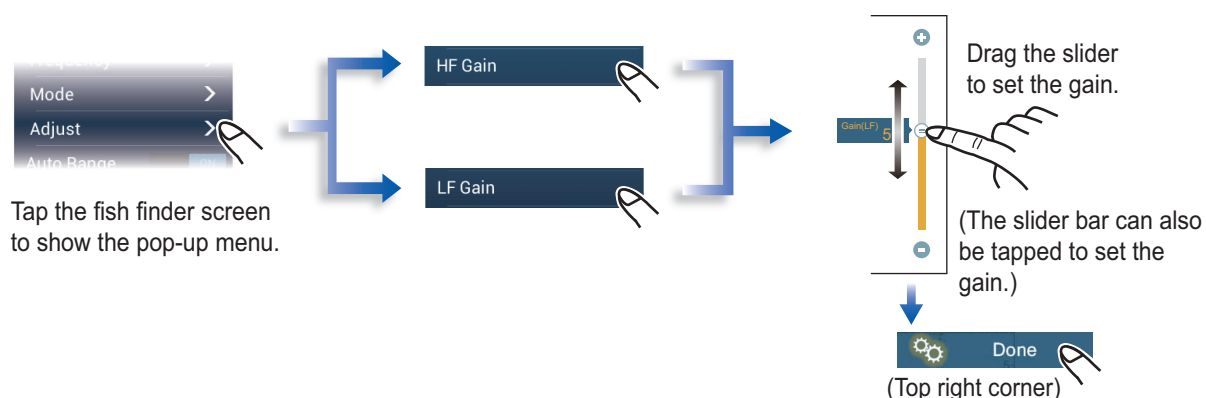


## Manual mode

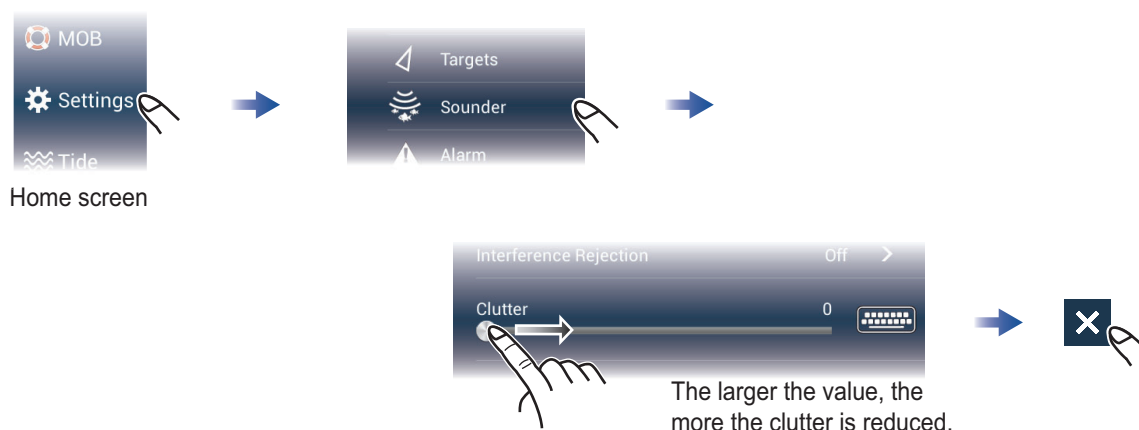
### How to change the range



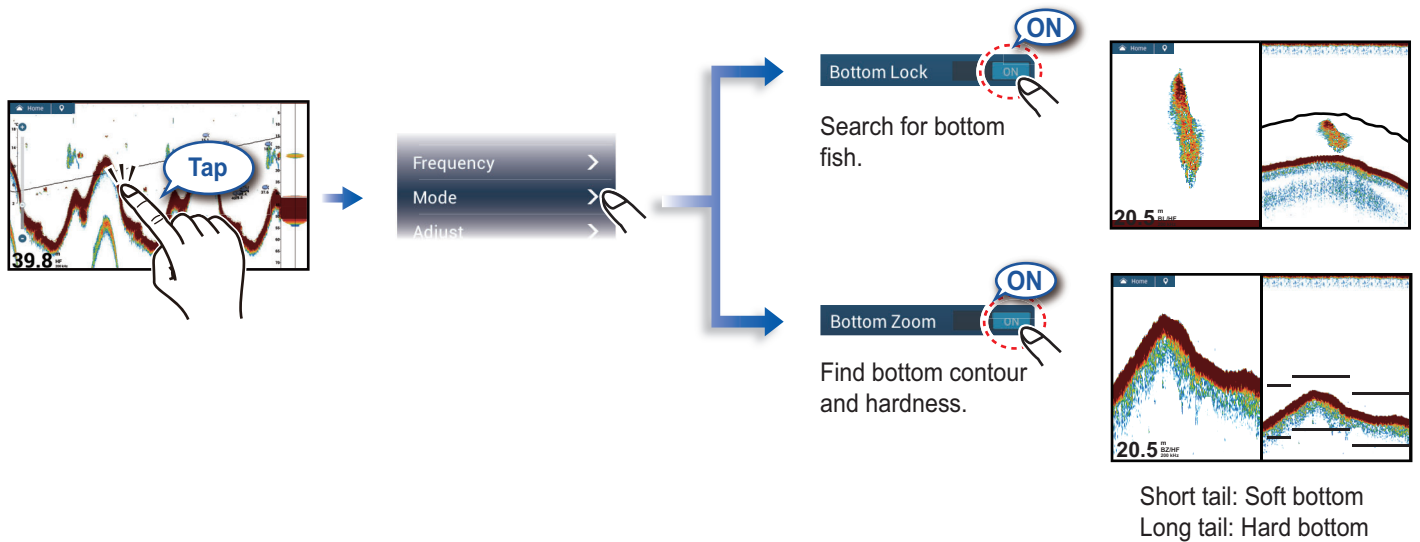
### How to adjust the gain



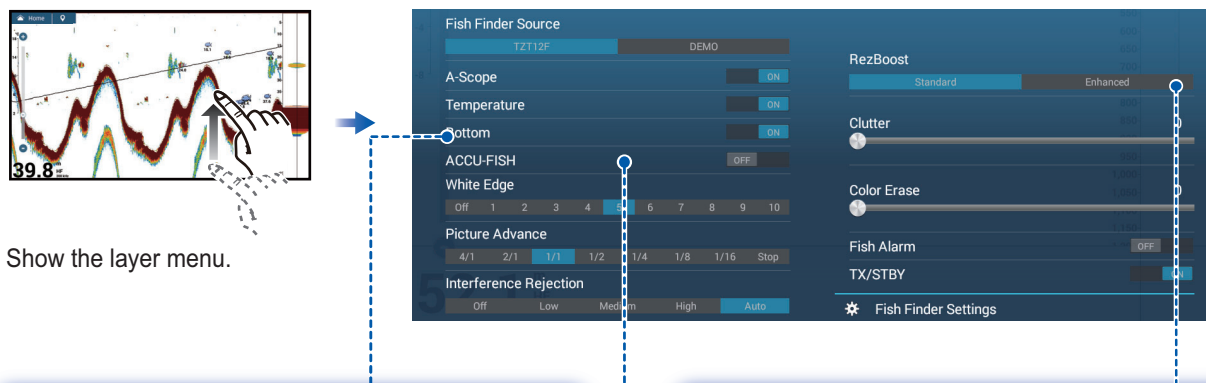
### How to reduce the clutter



## Zoom display

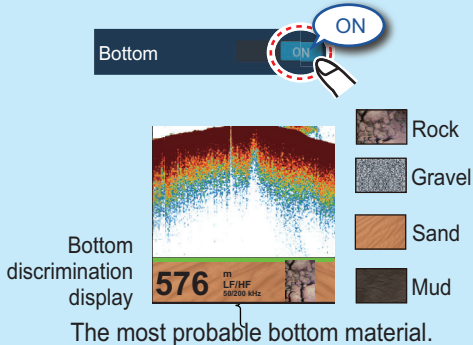


## ACCU-FISH™/Bottom Discrimination/RezBoost™



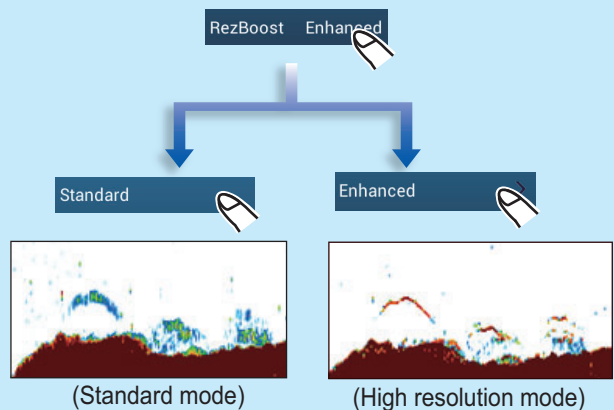
### Bottom Discrimination

Show probable bottom hardness (requires bottom discrimination capable transducer).



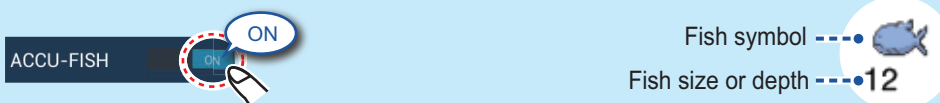
### RezBoost™

Raise the echo resolution (requires RezBoost™ capable transducer).



### ACCU-FISH™

Detected fish can be marked with a fish symbol (requires ACCU-FISH™ capable transducer).



### Notice

You can select fish symbol type, and fish size or depth indication from the menu - go to home screen, [Settings], [Sounder].

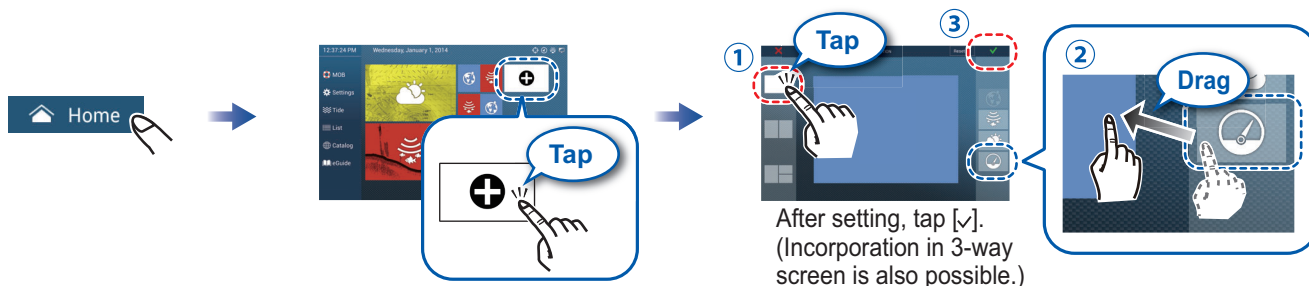


# Instrument Display

With connection of appropriate sensors, the instrument display shows various navigation data.

## How to enable the instrument display

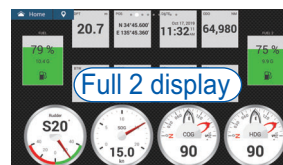
Add an instrument display icon to the home to screen to show the instrument display.



### How to switch instrument displays (ex. full display)



Swipe up or down to switch between displays.



## How to edit an instrument display



Tap the instrument display, then tap [Edit Page] on the pop-up menu.

### Edit mode



A white line surrounds each indication.

In the edit mode, you can remove, change, add, rearrange indications.

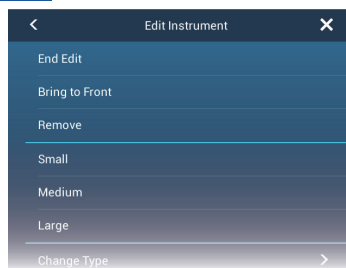
### To end the edit mode

Tap the screen, then tap [End Edit] on the pop-up menu.

### How to remove or change an indication



In the edit mode, tap the indication to remove or change.

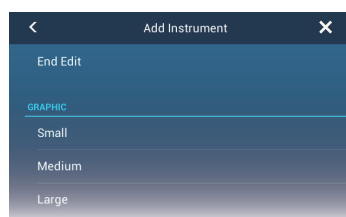


- Remove indication: Tap [Remove].
  - Change size: Tap [Small]\*, [Medium], or [Large].
  - Change type: Tap [Change Type].
  - Change indication: Tap indication in [NAVIGATION DATA], [ROUTE INFORMATION], [WIND AND WEATHER].
- Note:** Drag the menu to show hidden items.  
\* Graphic, digital only

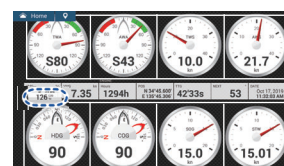
### How to add an indication



In the edit mode, tap a location not occupied by an instrument display.



Tap a size in desired category.



Added item appears at tapped location.

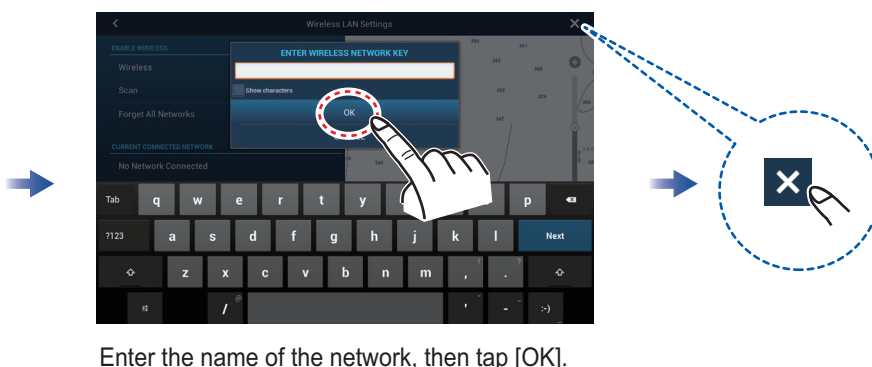
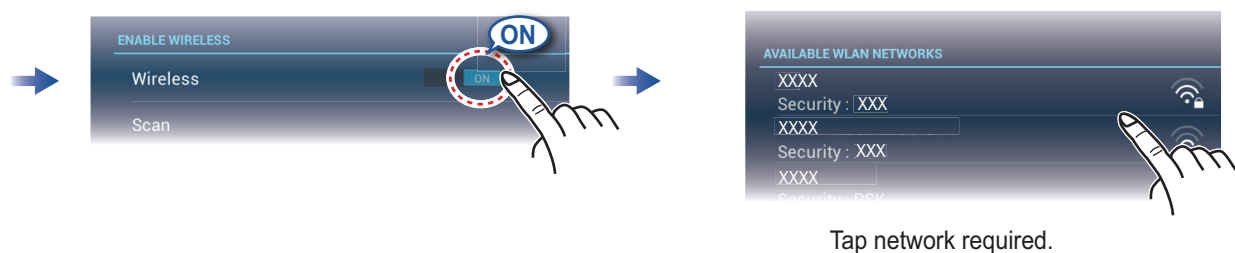
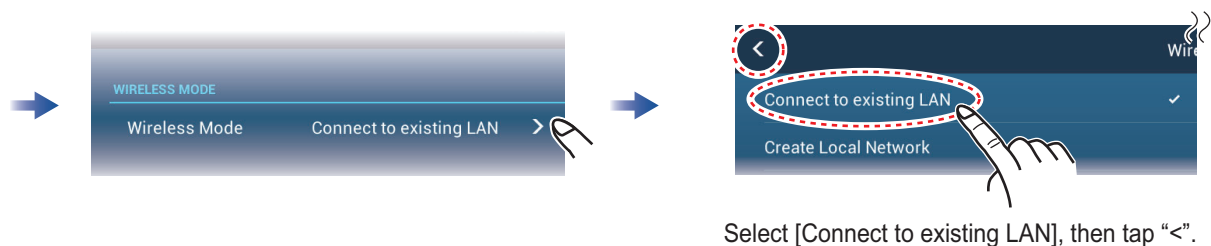
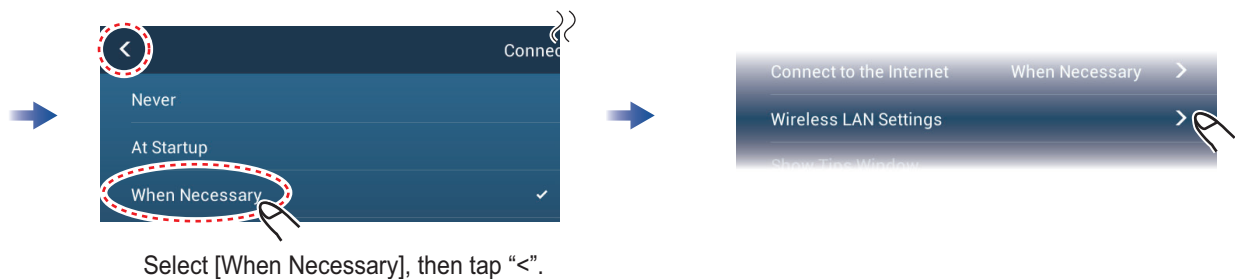
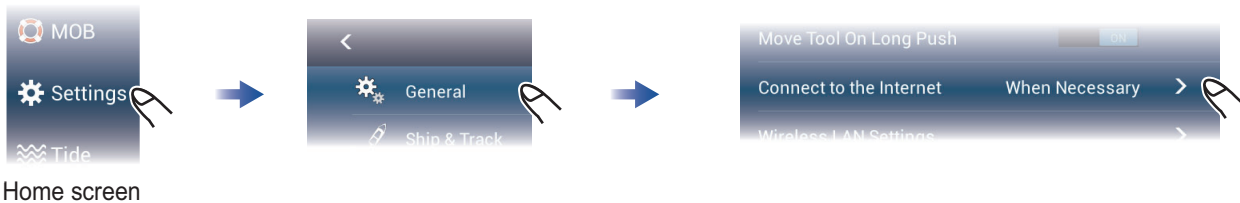
# Wireless LAN Settings

You can connect to the internet with the wireless LAN signal to download weather information and to connect to an iPhone, iPod, iPad, or Android™ device.

**Note:** This procedure is not available from a monitor connected to the HDMI OUT2 port (TZT2BB only).

## How to connect to an existing LAN

Connect to the existing LAN to download weather data or update the software.



## How to create a local wireless network

Create a local wireless network to connect to an iPhone, iPod, iPad, or Android device.

